



测试报告

编号: GZRL230200006203CN

日期: 2023-04-23

页码: 第1页 共10页

金禄电子科技股份有限公司

广东省清远市清城区高新技术开发区安丰工业园盈富工业区 M1-04,05A 地

下列样品信息由客户提供并确认:

样品名称 : PCB
型号 : 6RDP077A0
货号或批号 : 7031000609/7031000354/7031000350/7031000448
材料公司名 : 生益
材料型号: : S1000-2M
SGS 参考号 : SZRL230200013703CN
收样日期 : 2023-02-20
测试开始时间 : 2023-02-20
测试结束时间 : 2023-04-17
测试结果 : 请见下页

通标标准技术服务有限公司广州分公司
检测中心
授权签名

王伟荣
授权签字人



SGS-CSTC Standard Technical Services Co., Ltd.
Guangzhou Branch Testing Center for Reliability Testing Laboratory

Unless otherwise agreed in writing, this document is issued by the Company subject to its General Conditions of Service printed overleaf, available on request or accessible at <http://www.sgs.com/en/Terms-and-Conditions.aspx> and, for electronic format documents, subject to Terms and Conditions for Electronic Documents at <http://www.sgs.com/en/Terms-and-Conditions/Terms-e-Document.aspx>. Attention is drawn to the limitation of liability, indemnification and jurisdiction issues defined therein. Any holder of this document is advised that information contained hereon reflects the Company's findings at the time of its intervention only and within the limits of Client's instructions, if any. The Company's sole responsibility is to its Client and this document does not exonerate parties to a transaction from exercising all their rights and obligations under the transaction documents. This document cannot be reproduced except in full, without prior written approval of the Company. Any unauthorized alteration, forgery or falsification of the content or appearance of this document is unlawful and offenders may be prosecuted to the fullest extent of the law. Unless otherwise stated the results shown in this test report refer only to the sample(s) tested and such sample(s) are retained for 30 days only.

Attention: To check the authenticity of testing /inspection report & certificate, please contact us at telephone: (86-755) 8307 1443, or email: CN.Doccheck@sgs.com

NO.198, Kazhu Road, Science City, Economic & Technological Development Area, Guangzhou, Guangdong, China 510663
中国·广东·广州高新技术产业开发区科学城科珠路198号 邮编: 510663

t (86-20) 3213 6524 www.sgsgroup.com.cn
t (86-20) 3213 6524 sgs.china@sgs.com

Member of the SGS Group (SGS SA)



测试报告

编号: GZRL230200006203CN

日期: 2023-04-23

页码: 第2页 共10页

报告声明:

本报告中所测试的样品是由客户提供并确认的, 本报告中的测试结果只对来样负责, 不涉及对同一产品的其他样本。生产商应确保在生产时所有产品与本报告中的样品相符合。

在中华人民共和国境内, 检测方法不在 CMA 资质认定范围内, 本检测报告仅用于客户科研、教学、内部质量控制、产品研发等目的, 仅供内部参考。

生产商的声明或注解:

无

结果总结:

序号	测试项目	测试方法	结果	结论
1.	耐导电电极丝试验 (CAF)	参考 IPC-TM-650 2.6.27B:2020, IPC-TM-650 2.6.25C:2021 及客户要求。	见测试结果	合格

备注: 合格: 达到要求

不合格: 未达到要求

/: 只提供结果, 不下判定



Unless otherwise agreed in writing, this document is issued by the Company subject to its General Conditions of Service printed overleaf, available on request or accessible at <http://www.sgs.com/en/Terms-and-Conditions.aspx> and, for electronic format documents, subject to Terms and Conditions for Electronic Documents at <http://www.sgs.com/en/Terms-and-Conditions/Terms-e-Documents.aspx>. Attention is drawn to the limitation of liability, indemnification and jurisdiction issues defined therein. Any holder of this document is advised that information contained hereon reflects the Company's findings at the time of its intervention only and within the limits of Client's instructions, if any. The Company's sole responsibility is to its Client and this document does not exonerate parties to a transaction from exercising all their rights and obligations under the transaction documents. This document cannot be reproduced except in full, without prior written approval of the Company. Any unauthorized alteration, forgery or falsification of the content or appearance of this document is unlawful and offenders may be prosecuted to the fullest extent of the law. Unless otherwise stated the results shown in this test report refer only to the sample(s) tested and such sample(s) are retained for 30 days only.

Attention: To check the authenticity of testing /inspection report & certificate, please contact us at telephone: (86-755) 8307 1443, or email: CN.Doccheck@sgs.com

SGS-CSTC 深圳分公司
Guangzhou Branch Testing Center

NO.198, Kazhu Road, Science City, Economic & Technological Development Area, Guangzhou, Guangdong, China 510663
中国·广东·广州高新技术产业开发区科学城科珠路198号 邮编: 510663

t (86-20) 3213 6524 www.sgsgroup.com.cn
t (86-20) 3213 6524 sgs.china@sgs.com

Member of the SGS Group (SGS SA)

1. 测试项目: 耐导电电极丝试验 (CAF)

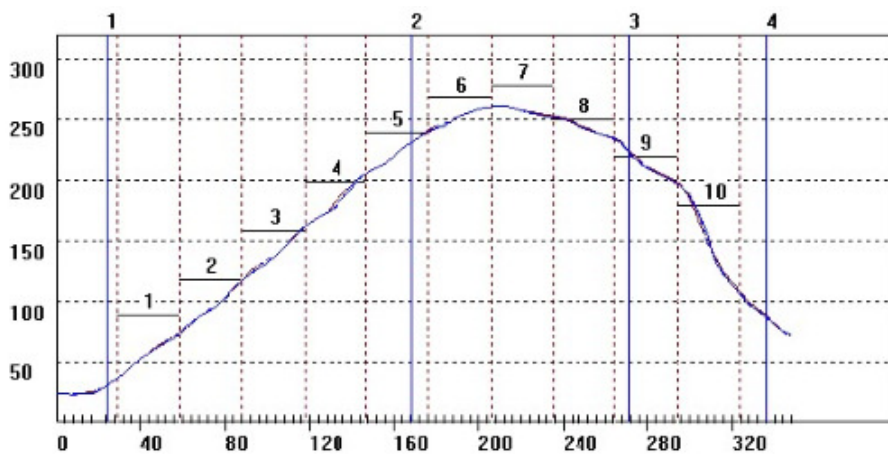
样品描述: PCB

预处理条件: 参考 IPC-TM-650 2.6.27B:2020

回流前 105℃ 烘烤 6 小时;

3 次回流焊;

回流曲线如下:



参数	要求	T ₁	T ₂	T ₃
从 30℃ 至 230℃ 的升温速率 (°C/s)	(0.5~2.0)°C/s	1.39	1.39	1.39
峰温 (°C)	(260±5)°C	261.7	261.2	261.1
230℃ 以上的时间 (s)	(120±30)s	104	100	104
255℃ 以上的时间 (s)	(20~30)s	28	28	28
从 230℃ 至 30℃ 的降温速率(°C/s)	(1.0~3.0)°C/s	2.17	2.17	2.22

样品种类: 1

平行样数量: 5 pc(s)

测试标准: 参考 IPC-TM-650 2.6.25C:2021 及客户要求。。

试验方法描述及步骤:

1) 烘烤: 在清洁的烤箱中烘烤样品

烘烤温度: 105℃; 烘烤时间: 6 小时

2) 预处理: 在无偏压状态下的预处理测试板 (无电势应用与任何测试电极), 在任何原始绝缘电阻测量之前, 要求的温湿度条件:

温度: 23℃; 湿度: 50%RH; 时间: 4 小时



Unless otherwise agreed in writing, this document is issued by the Company subject to its General Conditions of Service printed overleaf, available on request or accessible at <http://www.sgs.com/en/Terms-and-Conditions.aspx> and, for electronic format documents, subject to Terms and Conditions for Electronic Documents at <http://www.sgs.com/en/Terms-and-Conditions/Terms-e-Document.aspx>. Attention is drawn to the limitation of liability, indemnification and jurisdiction issues defined therein. Any holder of this document is advised that information contained hereon reflects the Company's findings at the time of its intervention only and within the limits of Client's instructions, if any. The Company's sole responsibility is to its Client and this document does not exonerate parties to a transaction from exercising all their rights and obligations under the transaction documents. This document cannot be reproduced except in full, without prior written approval of the Company. Any unauthorized alteration, forgery or falsification of the content or appearance of this document is unlawful and offenders may be prosecuted to the fullest extent of the law. Unless otherwise stated the results shown in this test report refer only to the sample(s) tested and such sample(s) are retained for 30 days only.

Attention: To check the authenticity of testing / inspection report & certificate, please contact us at telephone: (86-755) 8307 1443, or email: CN.Doccheck@sgs.com

SGS-CTC (Shenzhen) Testing Services Co., Ltd.
Guangzhou Branch Testing Services and Reliability Testing Laboratory

NO.198, Kazhu Road, Science City, Economic & Technological Development Area, Guangzhou, Guangdong, China 510663
中国·广东·广州高新技术产业开发区科学城科珠路198号 邮编: 510663

t (86-20) 3213 6524 www.sgsgroup.com.cn
t (86-20) 3213 6524 sgs.china@sgs.com

3) 无偏压温湿度存储:

温度: 85℃; 湿度: 85%RH; 时间: 96 小时

4) 有偏压温湿度存储:

温度: 85℃; 湿度: 85%RH; 测试时间: 1000 小时;

偏压: 100VDC; 测试电压: 100VDC; 保持时间: 60s;

间隔时间: 1 小时

5) 恢复:

温度: 23℃; 湿度: 50%RH; 时间: 24 小时

Lab 环境条件: 15℃~35℃, 25%RH~75%RH

客户要求:

绝缘电阻>100MΩ

恢复绝缘电阻大于初始绝缘电阻的 1/100。

测试结果:

绝缘电阻 (单位: Ω)

通道信息		样品 编号	初始绝缘 电阻	96 小时无偏压 后绝缘电阻	1000 小时偏 压后绝缘电阻	最小绝缘电阻 (0~1000)小时	恢复 绝缘电阻	结论
H2H 0.40mm A4	Diag-Tap	1#	4.17E+12	2.40E+08	3.39E+08	2.82E+08	2.82E+12	合格
		2#	4.90E+12	2.51E+08	3.72E+08	3.09E+08	3.47E+12	合格
		3#	5.25E+12	2.63E+08	3.63E+08	3.09E+08	4.07E+12	合格
		4#	5.37E+12	2.95E+08	3.80E+08	3.16E+08	4.17E+12	合格
		5#	5.37E+12	2.40E+08	3.39E+08	2.88E+08	4.27E+12	合格
	H-V-Tap	1#	5.01E+12	2.34E+08	2.95E+08	2.45E+08	4.27E+12	合格
		2#	5.25E+12	2.29E+08	3.31E+08	2.75E+08	4.27E+12	合格
		3#	5.25E+12	2.57E+08	3.47E+08	2.34E+08	3.89E+12	合格
		4#	5.62E+12	3.16E+08	3.72E+08	3.09E+08	4.37E+12	合格
		5#	5.75E+12	2.45E+08	3.09E+08	2.63E+08	4.47E+12	合格
H2H 0.45mm A5	Diag-Tap	1#	4.07E+12	1.91E+08	2.75E+08	2.34E+08	2.63E+12	合格
		2#	4.68E+12	2.34E+08	3.47E+08	2.75E+08	3.31E+12	合格
		3#	4.79E+12	2.34E+08	3.39E+08	2.88E+08	3.89E+12	合格
		4#	4.90E+12	2.40E+08	3.31E+08	2.75E+08	3.98E+12	合格
		5#	5.01E+12	2.00E+08	2.95E+08	2.51E+08	3.98E+12	合格



Unless otherwise agreed in writing, this document is issued by the Company subject to its General Conditions of Service printed overleaf, available on request or accessible at <http://www.sgs.com/en/Terms-and-Conditions.aspx> and, for electronic format documents, subject to Terms and Conditions for Electronic Documents at <http://www.sgs.com/en/Terms-and-Conditions/Terms-e-Document.aspx>. Attention is drawn to the limitation of liability, indemnification and jurisdiction issues defined therein. Any holder of this document is advised that information contained hereon reflects the Company's findings at the time of its intervention only and within the limits of Client's instructions, if any. The Company's sole responsibility is to its Client and this document does not exonerate parties to a transaction from exercising all their rights and obligations under the transaction documents. This document cannot be reproduced except in full, without prior written approval of the Company. Any unauthorized alteration, forgery or falsification of the content or appearance of this document is unlawful and offenders may be prosecuted to the fullest extent of the law. Unless otherwise stated the results shown in this test report refer only to the sample(s) tested and such sample(s) are retained for 30 days only.

Attention: To check the authenticity of testing /inspection report & certificate, please contact us at telephone: (86-755) 8307 1443, or email: CN.Doccheck@sgs.com

SGS-CTC (Shenzhen) Inspection & Testing Services Co., Ltd.
Guangzhou Branch Testing Center for Reliability Testing Laboratory

NO.198, Kazhu Road, Science City, Economic & Technological Development Area, Guangzhou, Guangdong, China 510663
中国·广东·广州高新技术产业开发区科学城科珠路198号 邮编: 510663

t (86-20) 3213 6524 www.sgs.com.cn
t (86-20) 3213 6524 sgs.china@sgs.com

通道信息		样品 编号	初始绝缘 电阻	96 小时无偏压 后绝缘电阻	1000 小时偏 压后绝缘电阻	最小绝缘电阻 (0~1000)小时	恢复 绝缘电阻	结论
H2H 0.45mm A5	H-V-Tap	1#	5.13E+12	2.04E+08	2.63E+08	2.19E+08	4.07E+12	合格
		2#	5.25E+12	2.34E+08	3.31E+08	2.45E+08	4.17E+12	合格
		3#	5.13E+12	2.45E+08	3.24E+08	2.63E+08	3.89E+12	合格
		4#	5.37E+12	2.75E+08	3.47E+08	2.88E+08	4.27E+12	合格
		5#	5.25E+12	1.91E+08	2.75E+08	2.00E+08	4.27E+12	合格
L2P 100μm L2H 225μm B2	Pad 600μm L2P100μm	1#	3.31E+13	1.15E+12	5.13E+12	3.16E+12	5.01E+12	合格
		2#	3.31E+13	1.86E+12	5.75E+12	3.63E+12	5.62E+12	合格
		3#	3.31E+13	2.45E+12	4.79E+12	3.72E+12	6.03E+12	合格
		4#	3.31E+13	2.82E+12	5.13E+12	3.16E+12	3.31E+13	合格
		5#	3.31E+13	2.69E+12	4.79E+12	4.07E+12	6.03E+12	合格
	On Pad L2H 225μm	1#	3.31E+13	2.88E+12	5.13E+12	3.80E+12	3.31E+13	合格
		2#	3.31E+13	2.95E+12	5.01E+12	3.63E+12	3.31E+13	合格
		3#	3.31E+13	2.95E+12	4.57E+12	3.55E+12	3.31E+13	合格
		4#	3.31E+13	3.24E+12	5.01E+12	3.98E+12	3.31E+13	合格
		5#	3.31E+13	3.02E+12	5.01E+12	3.98E+12	3.31E+13	合格
L2P 100μm L2H 250μm B3	Pad 600μm L2P 100μm	1#	5.62E+12	1.10E+12	4.57E+12	3.31E+12	4.47E+12	合格
		2#	3.31E+13	1.66E+12	5.13E+12	3.89E+12	4.90E+12	合格
		3#	3.31E+13	2.24E+12	5.13E+12	3.72E+12	5.50E+12	合格
		4#	3.31E+13	2.45E+12	5.37E+12	3.89E+12	5.50E+12	合格
		5#	3.31E+13	2.40E+12	4.79E+12	3.55E+12	5.62E+12	合格
	On Pad L2H 250μm	1#	3.31E+13	2.40E+12	5.25E+12	2.82E+12	5.62E+12	合格
		2#	3.31E+13	2.40E+12	4.79E+12	3.72E+12	5.75E+12	合格
		3#	3.31E+13	2.45E+12	4.47E+12	2.88E+12	5.75E+12	合格
		4#	3.31E+13	2.69E+12	5.01E+12	4.07E+12	5.62E+12	合格
		5#	3.31E+13	2.57E+12	4.47E+12	3.63E+12	6.03E+12	合格
L2P 125μm L2H 275μm B4	Pad 600μm L2P 125μm	1#	5.50E+12	1.07E+12	4.37E+12	3.31E+12	4.47E+12	合格
		2#	3.31E+13	1.66E+12	4.79E+12	3.80E+12	4.90E+12	合格
		3#	3.31E+13	2.19E+12	4.79E+12	3.24E+12	5.50E+12	合格
		4#	3.31E+13	2.51E+12	5.25E+12	3.63E+12	5.50E+12	合格
		5#	3.31E+13	2.34E+12	4.47E+12	3.31E+12	5.62E+12	合格



Unless otherwise agreed in writing, this document is issued by the Company subject to its General Conditions of Service printed overleaf, available on request or accessible at <http://www.sgs.com/en/Terms-and-Conditions.aspx> and, for electronic format documents, subject to Terms and Conditions for Electronic Documents at <http://www.sgs.com/en/Terms-and-Conditions/Terms-e-Documents.aspx>. Attention is drawn to the limitation of liability, indemnification and jurisdiction issues defined therein. Any holder of this document is advised that information contained hereon reflects the Company's findings at the time of its intervention only and within the limits of Client's instructions, if any. The Company's sole responsibility is to its Client and this document does not exonerate parties to a transaction from exercising all their rights and obligations under the transaction documents. This document cannot be reproduced except in full, without prior written approval of the Company. Any unauthorized alteration, forgery or falsification of the content or appearance of this document is unlawful and offenders may be prosecuted to the fullest extent of the law. Unless otherwise stated the results shown in this test report refer only to the sample(s) tested and such sample(s) are retained for 30 days only.

Attention: To check the authenticity of testing inspection report & certificate, please contact us at telephone: (86-755) 8307 1443, or email: CN.Doccheck@sgs.com

SGS-CTC (Shenzhen) Testing Services Co., Ltd.
Guangzhou Branch Testing Services Co., Ltd. (Guangzhou Branch Testing Services Co., Ltd.)

NO.198, Kezhu Road, Science City, Economic & Technological Development Area, Guangzhou, Guangdong, China 510663
中国·广东·广州高新技术产业开发区科学城科珠路198号 邮编: 510663

t (86-20) 3213 6524 www.sgs.com.cn
t (86-20) 3213 6524 sgs.china@sgs.com

通道信息	样品 编号	初始绝缘 电阻	96 小时无偏压 后绝缘电阻	1000 小时偏 压后绝缘电阻	最小绝缘电阻 (0~1000)小时	恢复 绝缘电阻	结论
L2P 125μm L2H 275μm B4	1#	3.31E+13	2.34E+12	4.79E+12	2.82E+12	5.62E+12	合格
	2#	3.31E+13	2.51E+12	4.90E+12	3.24E+12	5.62E+12	合格
	3#	3.31E+13	2.51E+12	4.57E+12	3.39E+12	5.62E+12	合格
	4#	3.31E+13	2.69E+12	4.90E+12	3.72E+12	5.75E+12	合格
	5#	3.31E+13	2.51E+12	3.80E+12	2.63E+12	5.89E+12	合格

曲线如下:

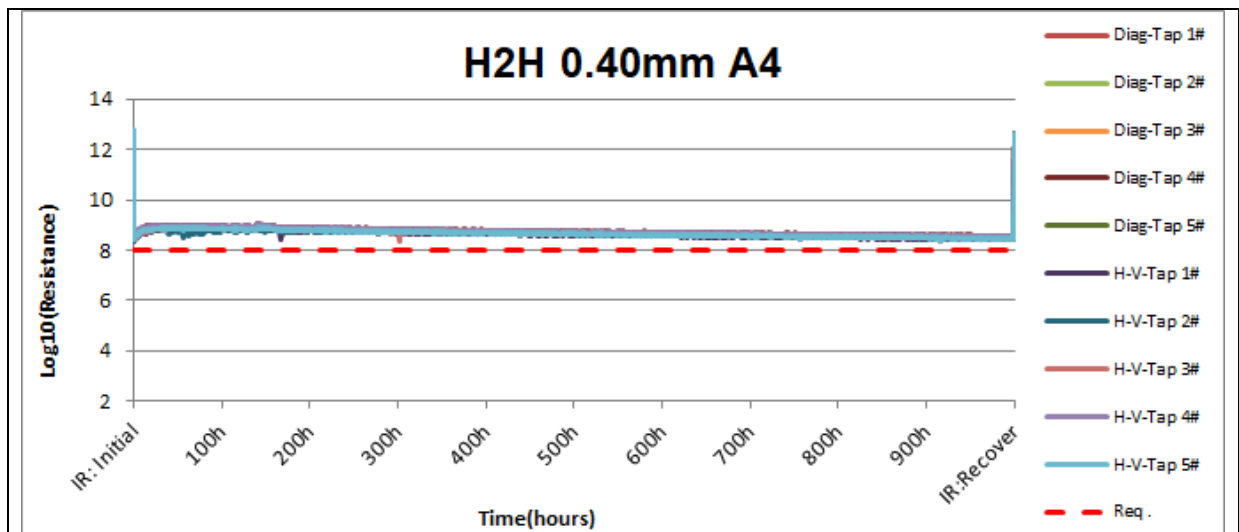


图.1 曲线-H2H 0.40mm A4

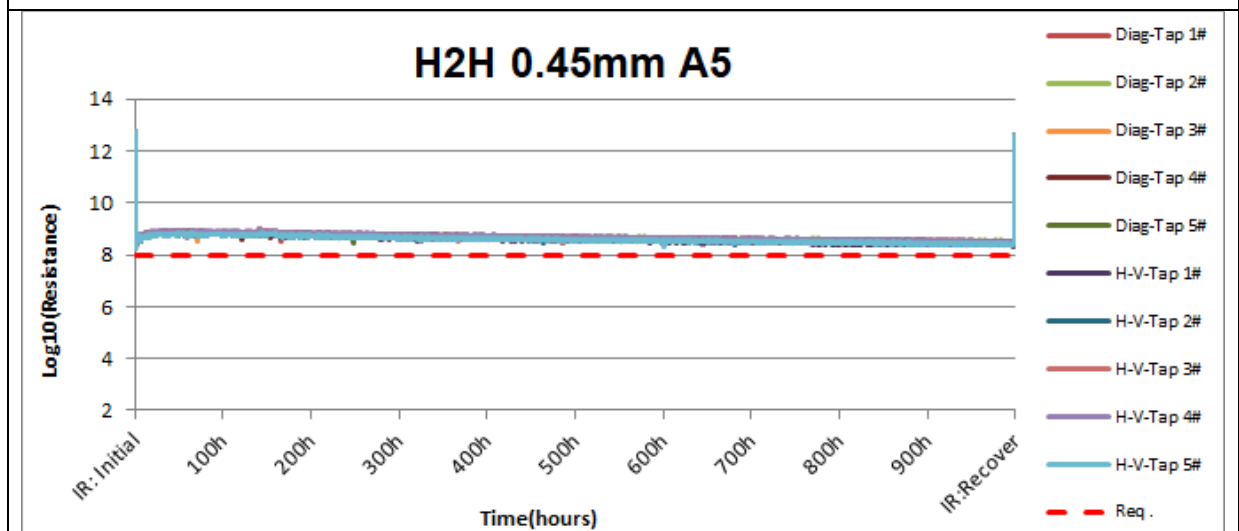


图.2 曲线-H2H 0.45mm A5



Unless otherwise agreed in writing, this document is issued by the Company subject to its General Conditions of Service printed overleaf, available on request or accessible at <http://www.sgs.com/en/Terms-and-Conditions.aspx> and, for electronic format documents, subject to Terms and Conditions for Electronic Documents at <http://www.sgs.com/en/Terms-and-Conditions/Terms-e-Documents.aspx>. Attention is drawn to the limitation of liability, indemnification and jurisdiction issues defined therein. Any holder of this document is advised that information contained hereon reflects the Company's findings at the time of its intervention only and within the limits of Client's instructions, if any. The Company's sole responsibility is to its Client and this document does not exonerate parties to a transaction from exercising all their rights and obligations under the transaction documents. This document cannot be reproduced except in full, without prior written approval of the Company. Any unauthorized alteration, forgery or falsification of the content or appearance of this document is unlawful and offenders may be prosecuted to the fullest extent of the law. Unless otherwise stated the results shown in this test report refer only to the sample(s) tested and such sample(s) are retained for 30 days only.

Attention: To check the authenticity of testing /inspection report & certificate, please contact us at telephone: (86-755) 8307 1443, or email: CN.Doccheck@sgs.com

NO.198, Kazhu Road, Science City, Economic & Technological Development Area, Guangzhou, Guangdong, China 510663
中国·广东·广州高新技术产业开发区科学城科珠路198号 邮编: 510663

t (86-20) 3213 6524 www.sgs.com.cn
t (86-20) 3213 6524 sgs.china@sgs.com

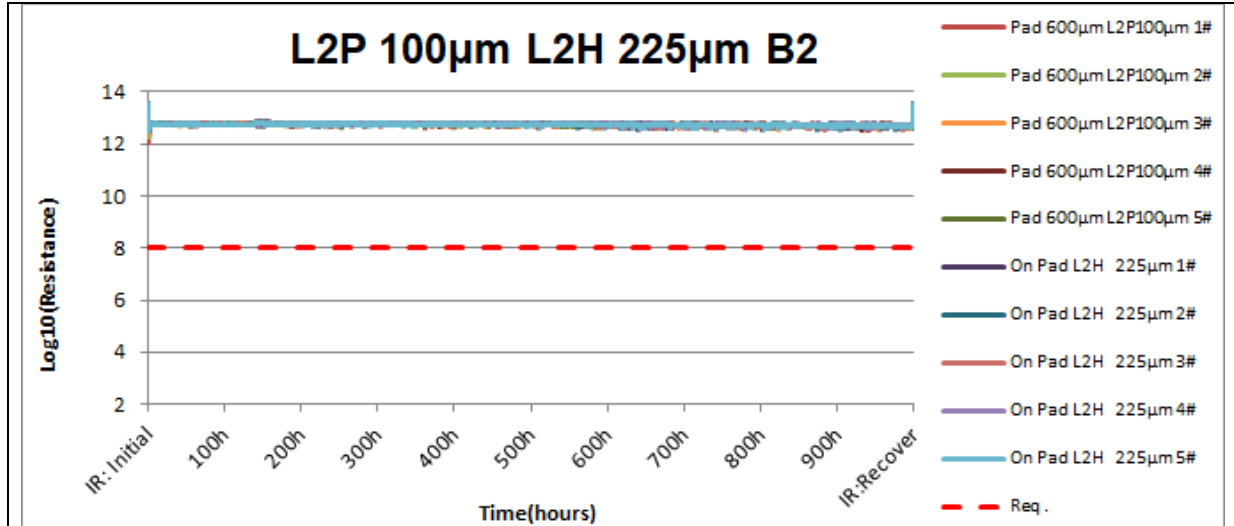


图.3 曲线-L2P 100μm L2H 225μm B2

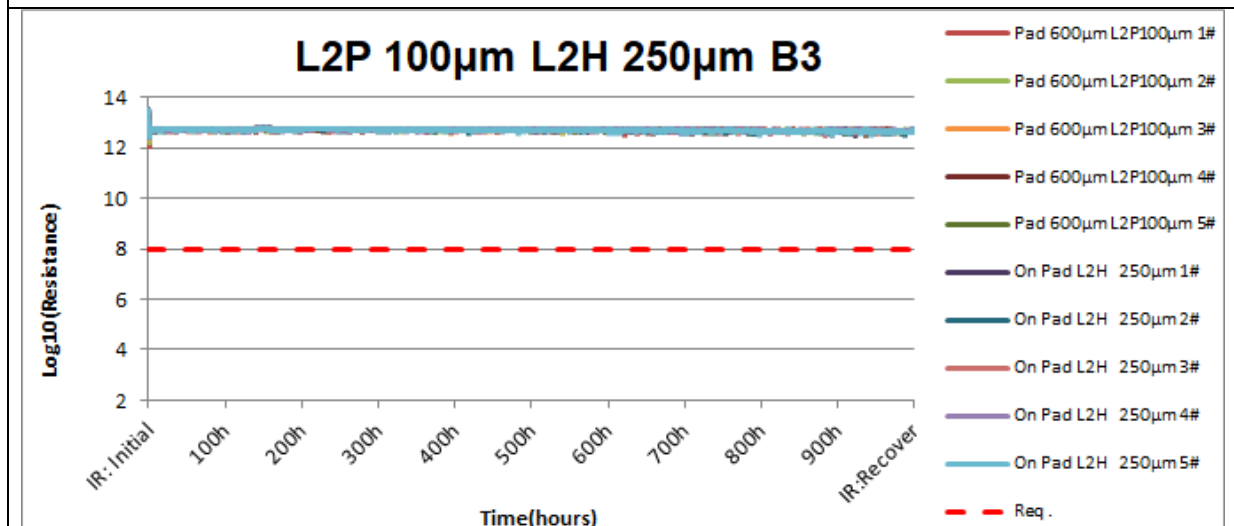


图.4 曲线-L2P 100μm L2H 250μm B3

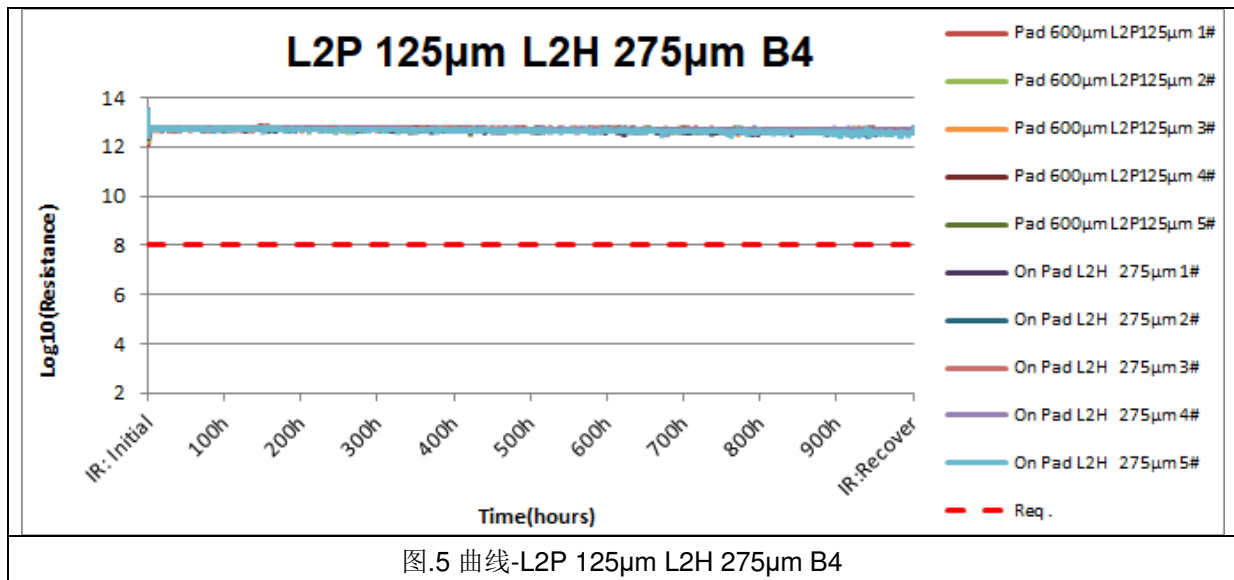


Unless otherwise agreed in writing, this document is issued by the Company subject to its General Conditions of Service printed overleaf, available on request or accessible at <http://www.sgs.com/en/Terms-and-Conditions.aspx> and, for electronic format documents, subject to Terms and Conditions for Electronic Documents at <http://www.sgs.com/en/Terms-and-Conditions/Terms-e-Document.aspx>. Attention is drawn to the limitation of liability, indemnification and jurisdiction issues defined therein. Any holder of this document is advised that information contained hereon reflects the Company's findings at the time of its intervention only and within the limits of Client's instructions, if any. The Company's sole responsibility is to its Client and this document does not exonerate parties to a transaction from exercising all their rights and obligations under the transaction documents. This document cannot be reproduced except in full, without prior written approval of the Company. Any unauthorized alteration, forgery or falsification of the content or appearance of this document is unlawful and offenders may be prosecuted to the fullest extent of the law. Unless otherwise stated the results shown in this test report refer only to the sample(s) tested and such sample(s) are retained for 30 days only.

Attention: To check the authenticity of testing /inspection report & certificate, please contact us at telephone: (86-755) 8307 1443, or email: CN.Doccheck@sgs.com

NO.198, Kazhu Road, Science City, Economic & Technological Development Area, Guangzhou, Guangdong, China 510663
中国·广东·广州高新技术产业开发区科学城科珠路198号 邮编: 510663

t (86-20) 3213 6524 www.sgsgroup.com.cn
t (86-20) 3213 6524 sgs.china@sgs.com



测试照片

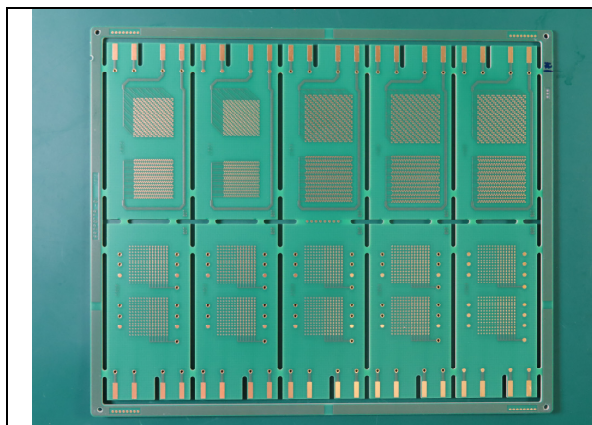


图.6 测试前样品外观检查-正面

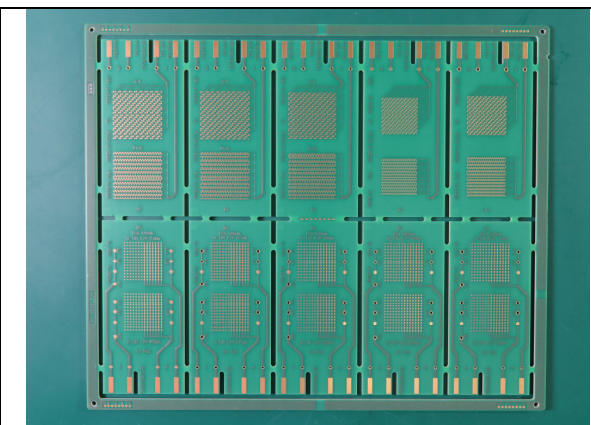


图.7 测试前样品外观检查-反面



Unless otherwise agreed in writing, this document is issued by the Company subject to its General Conditions of Service printed overleaf, available on request or accessible at <http://www.sgs.com/en/Terms-and-Conditions.aspx> and, for electronic format documents, subject to Terms and Conditions for Electronic Documents at <http://www.sgs.com/en/Terms-and-Conditions/Terms-e-Document.aspx>. Attention is drawn to the limitation of liability, indemnification and jurisdiction issues defined therein. Any holder of this document is advised that information contained hereon reflects the Company's findings at the time of its intervention only and within the limits of Client's instructions, if any. The Company's sole responsibility is to its Client and this document does not exonerate parties to a transaction from exercising all their rights and obligations under the transaction documents. This document cannot be reproduced except in full, without prior written approval of the Company. Any unauthorized alteration, forgery or falsification of the content or appearance of this document is unlawful and offenders may be prosecuted to the fullest extent of the law. Unless otherwise stated the results shown in this test report refer only to the sample(s) tested and such sample(s) are retained for 30 days only.

Attention: To check the authenticity of testing /inspection report & certificate, please contact us at telephone: (86-755) 8307 1443, or email: CN.Doccheck@sgs.com

SGS-CSTC 深圳分公司
Guangzhou Branch Testing Center

NO.198, Kazhu Road, Science City, Economic & Technological Development Area, Guangzhou, Guangdong, China 510663
中国·广东·广州高新技术产业开发区科学城科珠路198号 邮编: 510663

t (86-20) 3213 6524 www.sgsgroup.com.cn
t (86-20) 3213 6524 sgs.china@sgs.com

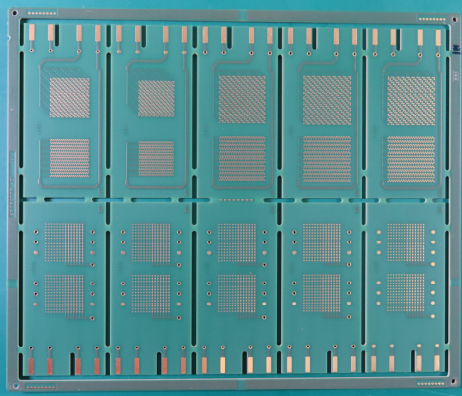


图.8 回流后样品外观检查-正面

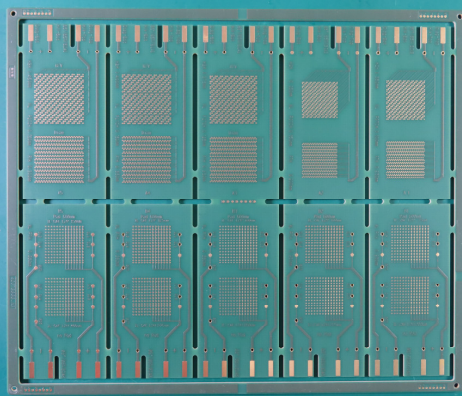


图.9 回流后样品外观检查-反面

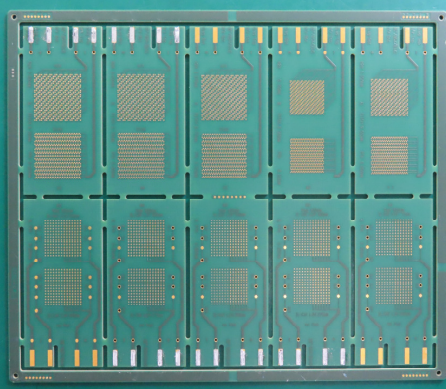


图.10 CAF 测试后样品外观检查-正面

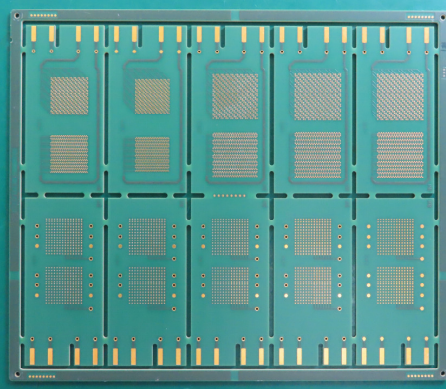


图.11 CAF 测试后样品外观检查-反面

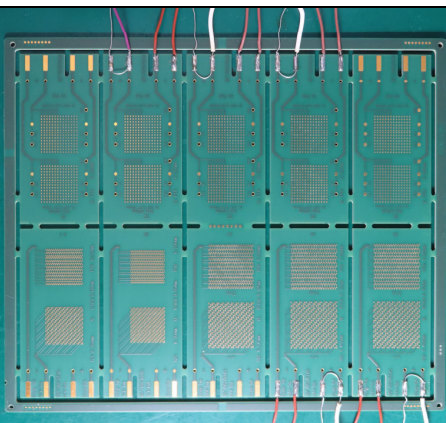


图.12 焊线图



图.13 样品放置图



Unless otherwise agreed in writing, this document is issued by the Company subject to its General Conditions of Service printed overleaf, available on request or accessible at <http://www.sgs.com/en/Terms-and-Conditions.aspx> and, for electronic format documents, subject to Terms and Conditions for Electronic Documents at <http://www.sgs.com/en/Terms-and-Conditions/Terms-e-Documents.aspx>. Attention is drawn to the limitation of liability, indemnification and jurisdiction issues defined therein. Any holder of this document is advised that information contained hereon reflects the Company's findings at the time of its intervention only and within the limits of Client's instructions, if any. The Company's sole responsibility is to its Client and this document does not exonerate parties to a transaction from exercising all their rights and obligations under the transaction documents. This document cannot be reproduced except in full, without prior written approval of the Company. Any unauthorized alteration, forgery or falsification of the content or appearance of this document is unlawful and offenders may be prosecuted to the fullest extent of the law. Unless otherwise stated the results shown in this test report refer only to the sample(s) tested and such sample(s) are retained for 30 days only.

Attention: To check the authenticity of testing /inspection report & certificate, please contact us at telephone: (86-755) 8307 1443, or email: CN.Doccheck@sgs.com

NO.198, Kazhu Road, Science City, Economic & Technological Development Area, Guangzhou, Guangdong, China 510663
中国·广东·广州高新技术产业开发区科学城科珠路198号 邮编: 510663

t (86-20) 3213 6524 www.sgsgroup.com.cn
t (86-20) 3213 6524 sgs.china@sgs.com



测试报告

编号: GZRL230200006203CN

日期: 2023-04-23

页码: 第10页 共10页

设备信息:

设备编号	设备名称	型号	校准日期	下次校准日期
SZREL-318	温湿度试验箱	C4-600 E-series	2023-01-12	2024-01-11
SZREL-138	无铅热风回流炉	IPC-710A-EC0	2023-01-03	2024-01-02
SZREL-224	温湿度试验箱	C4-600 E-series	2022-08-08	2023-08-07
SZREL-520	线路板测量仪(绝缘电阻测试仪)	AutoCAF2+256	2022-12-02	2023-12-01

报告结束



Unless otherwise agreed in writing, this document is issued by the Company subject to its General Conditions of Service printed overleaf, available on request or accessible at <http://www.sgs.com/en/Terms-and-Conditions.aspx> and, for electronic format documents, subject to Terms and Conditions for Electronic Documents at <http://www.sgs.com/en/Terms-and-Conditions/Terms-e-Documents.aspx>. Attention is drawn to the limitation of liability, indemnification and jurisdiction issues defined therein. Any holder of this document is advised that information contained hereon reflects the Company's findings at the time of its intervention only and within the limits of Client's instructions, if any. The Company's sole responsibility is to its Client and this document does not exonerate parties to a transaction from exercising all their rights and obligations under the transaction documents. This document cannot be reproduced except in full, without prior written approval of the Company. Any unauthorized alteration, forgery or falsification of the content or appearance of this document is unlawful and offenders may be prosecuted to the fullest extent of the law. Unless otherwise stated the results shown in this test report refer only to the sample(s) tested and such sample(s) are retained for 30 days only.

Attention: To check the authenticity of testing /inspection report & certificate, please contact us at telephone: (86-755) 8307 1443, or email: CN.Doccheck@sgs.com

SGS-CTC (Shenzhen) Inspection & Testing Services Co., Ltd.
Guangzhou Branch Testing Center (Inspection and Reliability Testing Laboratory)

NO.198, Kazhu Road, Science City, Economic & Technological Development Area, Guangzhou, Guangdong, China 510663
中国·广东·广州高新技术产业开发区科学城科珠路198号 邮编: 510663

t (86-20) 3213 6524 www.sgsgroup.com.cn
t (86-20) 3213 6524 sgs.china@sgs.com

Member of the SGS Group (SGS SA)